

CONTENTS



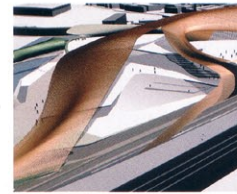
**P.45
BOOK REVIEW:
HOLLOW LAND**



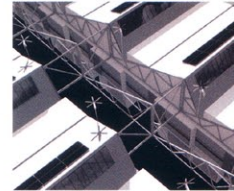
**P.21
REIACH AND HALL/
PIER ARTS CENTRE**



**P.58
SKETCHBOOK:
AMIR SANEI**



**P.12
MANGERA YVARA
OFF MEGA-MOSQUE**



**P.10
MITCHELL TAYLOR'S
LIVE/WORK HANGAR**

SUBSCRIBE
 • Go to www.ajplus.co.uk/subsignup;
 • Call 0870 830 4959; or
 • Email ajo@subscription.co.uk
 A £129 subscription (students £89) includes:
 • The AJ every Thursday;
 • AJ Specification every month;
 • Access to www.ajplus.co.uk and
www.ajs Specification.com;
 • Six breaking stories in a daily email alert



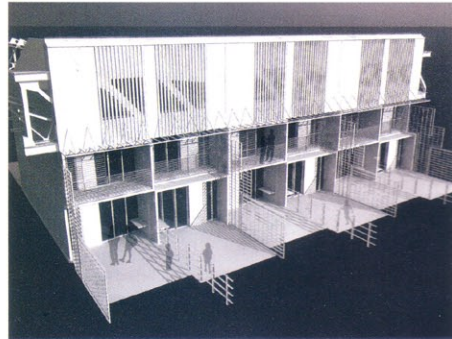
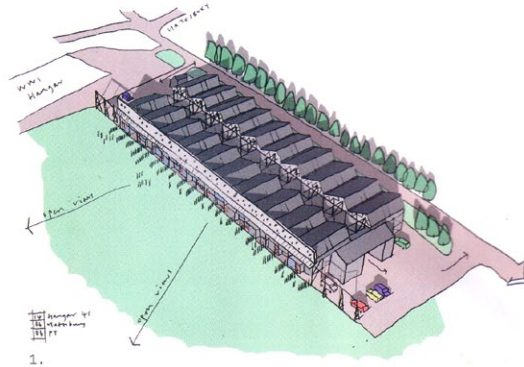
**P.39
TECHNICAL:
LIVERPOOL ARENA**

NEWS	AGENDA	BUILDING STUDY	TECHNICAL & PRACTICE	REVIEWS	REGULARS	JOB'S & CLASSIFIED	AJPLUS.CO.UK
7 Weekly digest/online news	12 – 13 <i>Mangera Yvars</i> loses mega-mosque scheme to <i>Allies and Morrison</i>	21 – 33 <i>Reiach and Hall's</i> refurbishment of a former harbour storage building and street house to create the Pier Arts Centre in Orkney	37 Update	45 Book: Eyal Weizman's <i>Hollow Land: Israel's Architecture of Occupation</i>	16 <i>Astragal</i> and <i>Hellman</i>	50 Top five jobs: • <i>Pringle Brandon</i> – project architects • <i>Centurion</i> – design director • <i>Macdonald</i> – assistant director of estates • <i>Patel Taylor</i> – architects • <i>University of Ulster</i> – architecture lecturers	• Niemeyer's Alvorada Palace goes online at www.ajs Specification.com • Daily breaking news at www.ajplus.co.uk/news • More than 550 buildings at www.ajs Specification.com • Competitions at www.ajplus.co.uk/awardscomps • More than 70 events at www.ajplus.co.uk/diary • The latest jobs at www.ajplus.co.uk/jobs
9 Architecture week scrapped as Arts Council pulls funding	14 Women architects facing glass ceiling at work, study reveals	34 – 35 Working detail: A roof with bands of glazing supported by zinc-clad mullions	39 – 41 <i>Wilkinson Eyre's</i> Liverpool Arena – designed almost entirely using 3D modelling	46 – 47 Exhibition: Alan Johnston and <i>Reiach and Hall's</i> outdoor installation	18 Letters	55 Classified advertising	
10 – 11 <i>Mitchell Taylor Workshop</i> turns Wiltshire aircraft hangars into live/work space			42 – 43 Barbados' climate is a challenge for <i>Anip's</i> cricket ground	48 Book: <i>The Modern Sculpture Reader</i> , edited by Jon Wood et al	58 Sketchbook: <i>Amir Sanei</i>		
			44 Legal/Webwatch				

HOMES ARE CREATED FROM HANGARS

Mitchell Taylor Workshop (MTW) has won planning permission for this £12 million carbon-neutral live/work scheme in Yatesbury, Wiltshire. Hangar 45 is formed of 29 units that have been incorporated into a dilapidated Second World War aircraft hangar sited in what MTW director Piers Taylor described as a 'stark landscape'. The scheme is defined by an internal street which, said Taylor, 'conceals much traffic and parking, enabling each live/work unit to open out directly on to open countryside'. Much of the hangar's existing steel has been retained, but MTW has also inserted new loadbearing offset steel trusses. Taylor said: 'The rest of the building will be clad in steel and white tiles to create a simple, crisp finish. It's sui generis – a hybrid use between B1 studio and residential, and is the first major contemporary live/work space in a rural environment.' The 7,000m² scheme, which sits on the edge of the Avebury Circle World Heritage Site, also boasts a range of sustainable features, including a combined heat and power wood-chip system and wind turbines. It is expected to start on site towards the end of summer, with construction scheduled to take 16 months.

By Max Thompson



- 1. A disused Second World War aircraft hangar is to be turned into live/work units in Mitchell Taylor's scheme
- 2. The site as it is today
- 3 & 4. The 29 units will be constructed around an internal street
- 5. The offset steel supports

